

Brottsofferjouren i Västerort/ Victim Support Centre in Västerort

Annika af Sandeberg, operations manager

Jennie Ström, coordinator

Agenda

- The national association, Victim Support Sweden
- Our local centre, Victim Support Västerort
- The help/support that we provide
- Collaboration with authorities and other organizations
- Questions



Victim Support Sweden

- Non-profit umbrella organization
- Represents the interests of victims and witnesses in order to influence policy and practice, e.g consultation body for the government
- Collaborations

Victim Support Sweden

- About 70 local victim support centers are affiliated with Victim Support Sweden
- The local centers offers support to victims, witnesses and friends/family members to victims, witnesses or offenders
- National helpline 0200-21 29 19

Support in other languages



About 20 languages

The biggest; arabic, dari, farsi, polish
and russian

Local victim support centers

- All types of criminal cases
- Police report not necessary
- Anonymous
- No limited time for contact
- Free of charge
- Professional secrecy



In total 26 723 errands nationwide (2017)

Witnesses support



- Emotional support and information before, during and after trial
- District courts and Courts of appeal
- Includes support to witnesses, the injured party and their relatives

40 034 nationwide (2017)

Victim Support Västerort

- The board
- The employees
- The trained volunteers

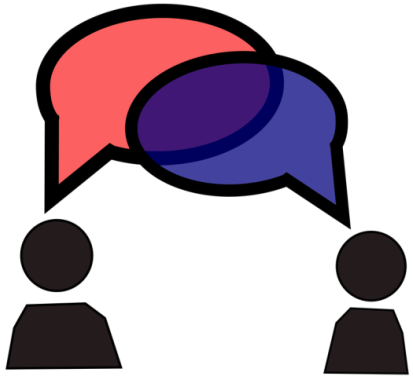


Target group, who do we support?

- Victims
- Witnesses
- Friends and family members to victims, witnesses or offenders



How do we support/help?



”Fellow human support” is often enough to cope with crisis (Hedrenius & Johansson 2013)

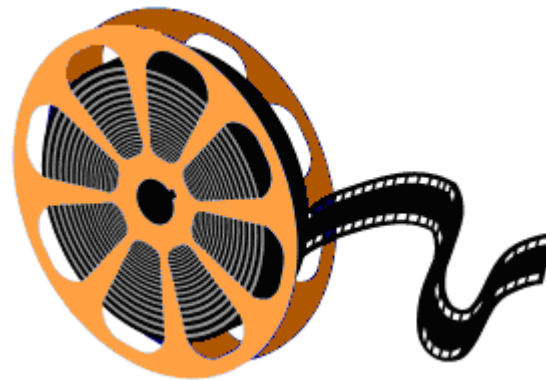
- Emotional support
- Practical help and information about the legal process
- Support when reporting a crime to the police, questionings at the police and in trials

How do we support/help?

- Information about economical compensation
- Support in contact with authorities
- References/linkings to other organizations



Fredrika



Domestic violence



Collaboration

- The police
- Social services
- Healthcare
- Women 's shelters
- Support centre for young victims of crime

Siri

- How could your organisation help?
- What obstacles need to be overcome?
- Who do you need to collaborate with?

