



ZDB

ZYRA PER DJEM DHE BURRA
SHËRBEVE KESHILLIM PER DJEM DHE BURRA
DE KRYEJNE VEPRIME TE DHUNSHME



Emergency shelter

Woman to Woman

DOMESTIC VIOLENCE INTERVENTION
PROGRAM

Atila Uligaj, October, 2018

ALBANIA

Shkoder



- Population 2´870´324 inhabitants (49.9% women population)
- Unemployment rate 13.9%
- Prefecture of Shkoder 204´994 inhabitants
- Situated in the northwestern Albania

Domestic violence emerged as an issue of concern in Albania in the 1990s.

In 1992 emerged the first NGOs focused on women's issues, including violence against women and women's human rights.

Albanian Government (1992 - 2017):

- Ratified important conventions for the human rights protection, (CEDAW 1993, IC 2012)
- Passed the law against violence in the family relations and the law for Gender Equality (2006) - Improved the legal framework relevant to Domestic violence, (amendments)
- Developed strategies and action plans for gender equality and domestic violence against women and children; national plan for the inclusion of men and boys against DV
- Established gender focal points in 58 Municipalities out of 61, role of local coordinators
- Established DV Referral Mechanism in 37 Municipalities out of 61
- Established the GE National Council
- Prepared and submitted GREVIO report

Domestic violence in the country

2017 reports of crime in the family

- 4543 cases of violence and other crimes within the family
- 2593 cases issued Immediate protection order and Protection order
- 3243 or 73.6% of the total number of victims of violence are women and girls
- 13 murders of DV crime, resulting in 14 victims, 9 women killed.
- 2017, out of 50 homicides, about 26.0 % homicides as a result of family relations

Rates of DV crimes
2015, 2016, 2017

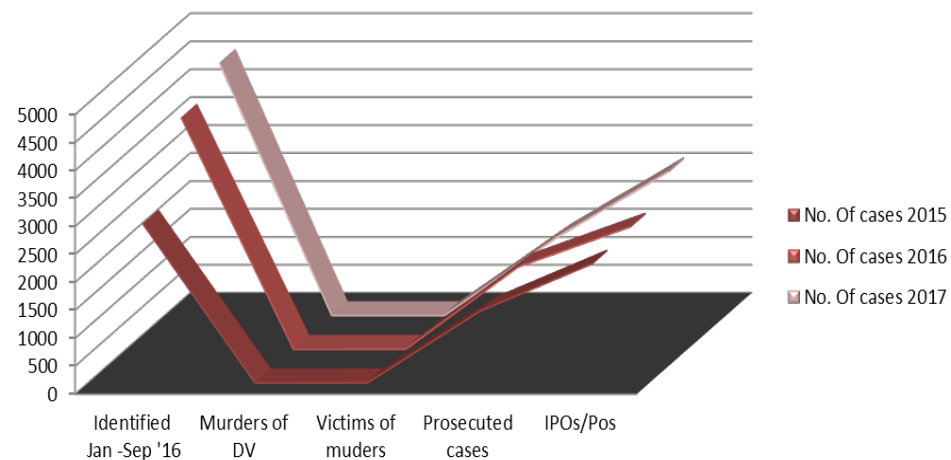


Fig. 1

Services in the country

- 1 public residential shelter (DV victims) financed by the state budget;
- Services for DV victims offered by women's NGOs all over the country; -
- Services for DV supported by international donor funding;
- 3 non public residential shelters (victims of trafficking and DV);
- 3 emergency shelters (DV victims)
- Three National women's networks,
 - Albanian Women Empowerment Network (AWEN) - formal,
 - The Network against Domestic Violence and Trafficking in Human Beings - informal
 - Monitoring Network against Gender-Based Violence - informal

DOMESTIC VIOLENCE INTERVENTION PROGRAM

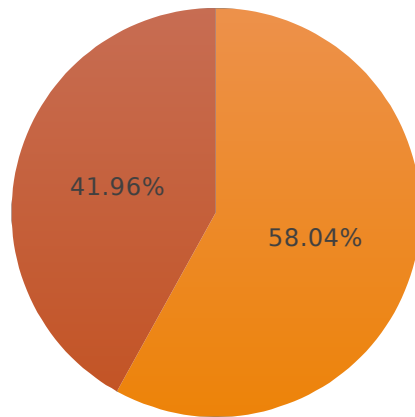
— ~~Work of W2W is focused on mitigating effects of gender based and domestic violence by providing advocacy services and empowerment programs for victims, in coordinated partnerships with public and private agencies.~~

*Focus on the ALTERNATIVES
rather than barriers!*

Study on Domestic violence

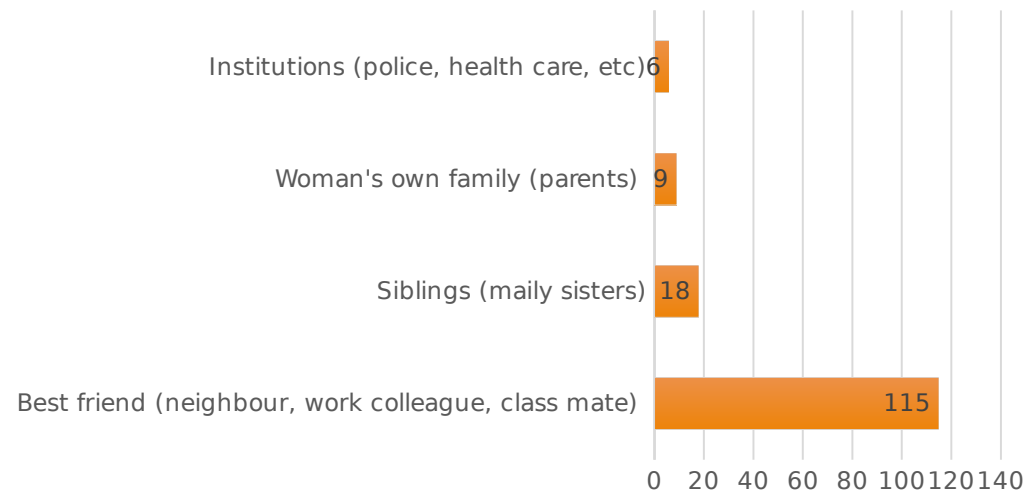
no=255

Willingness to disclose violence



■ yes ■ no

Disclosure preference



Needs of women for:

- information
- trusted connections and resources
- access to services
- sustainable programs (guarantee safety and continuity)
- independence, economic stability

Identify Needs

Build Strengths



www.shutterstock.com • 763396244



**Advocacy
services**

Where should we start?
When?
How?
Who should we work
with?
What method can we use



Emergency shelter

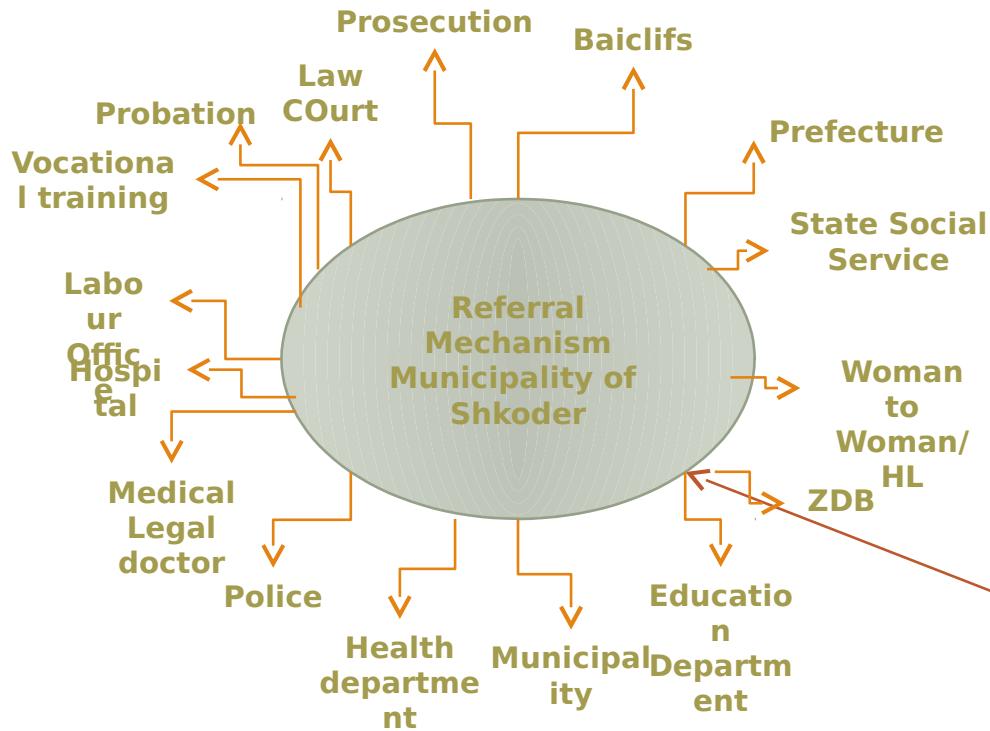


COMPACT - Community Pact against GBV

“If we want to fight gender based violence, we are going to need thousands of people working on it, not just service providers, but community residents as well.”
(WtW activist)

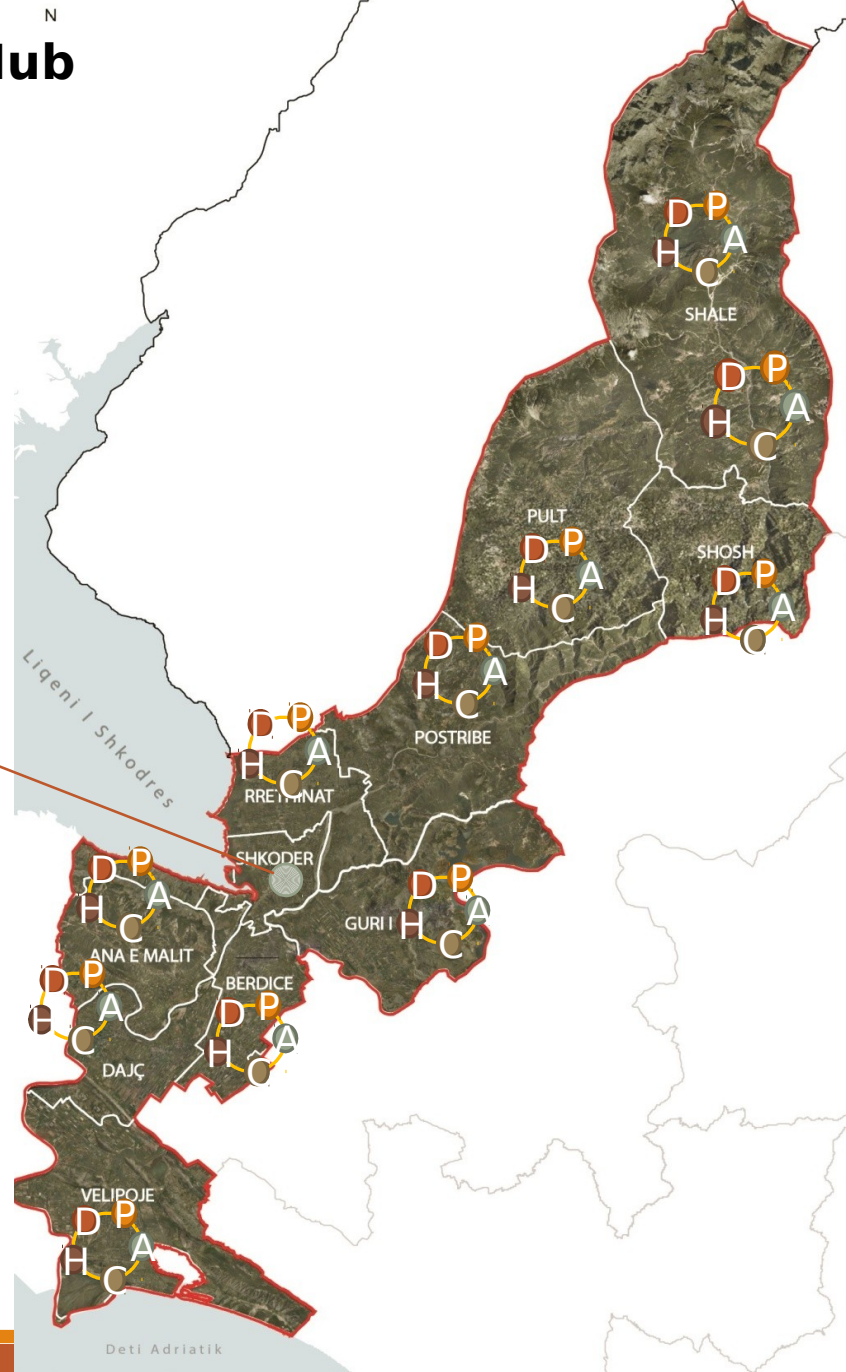
- a program focused on the community engagement
- a program that engages men and boys
- build a POOL OF ACTIVE COMMUNITY MEMBERS
 - aware of the destructive effects of GBV,
 - committed to take actions and fight GBV,
 - committed to change the traditional norms and mind-sets in their living and working environments and also
 - support each other with their initiatives and challenges

Domestic Violence Service Hub



Legend:

- Health Center
- School
- Administrative Unit
- Police
- Community group

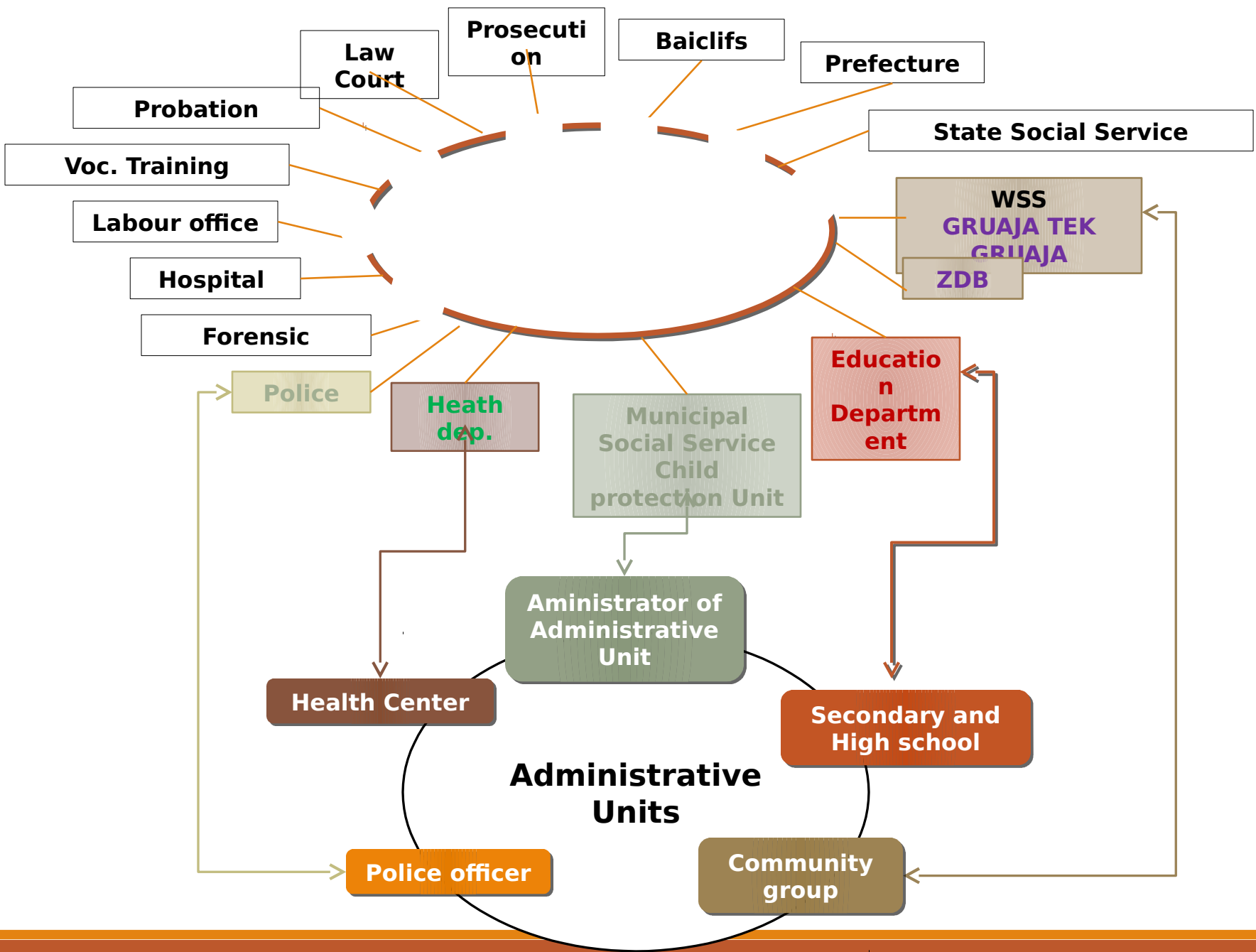


CoCo action – Connect and cooperate component – network of trustees



INCREASE the opportunities for safe disclosure

CHANGE the culture of silence that exists within communities
FACILITATE access to support.



Law Court

Prosecution

Bailiffs

Prefecture

Probation

State Social Service

Voc. Training

**WSS
GRUJA TEK
GRUJA**

Labour office

ZDB

Hospital

Forensic

**Education
Department**

Police

**Health
dep.**

**Municipal
Social Service
Child
protection Unit**

**Administrator of
Administrative
Unit**

Health Center

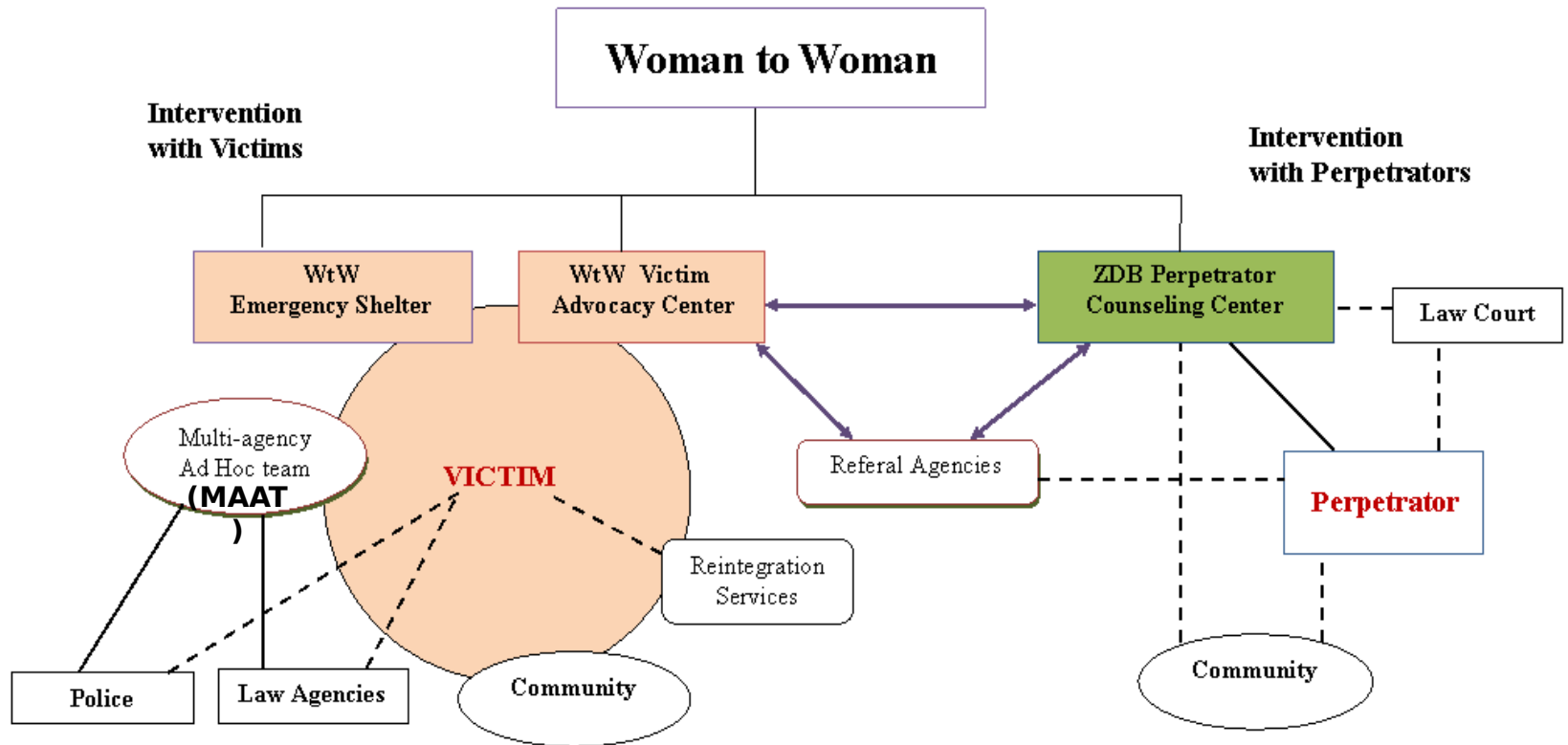
**Secondary and
High school**

**Administrative
Units**

Police officer

**Community
group**

DV services



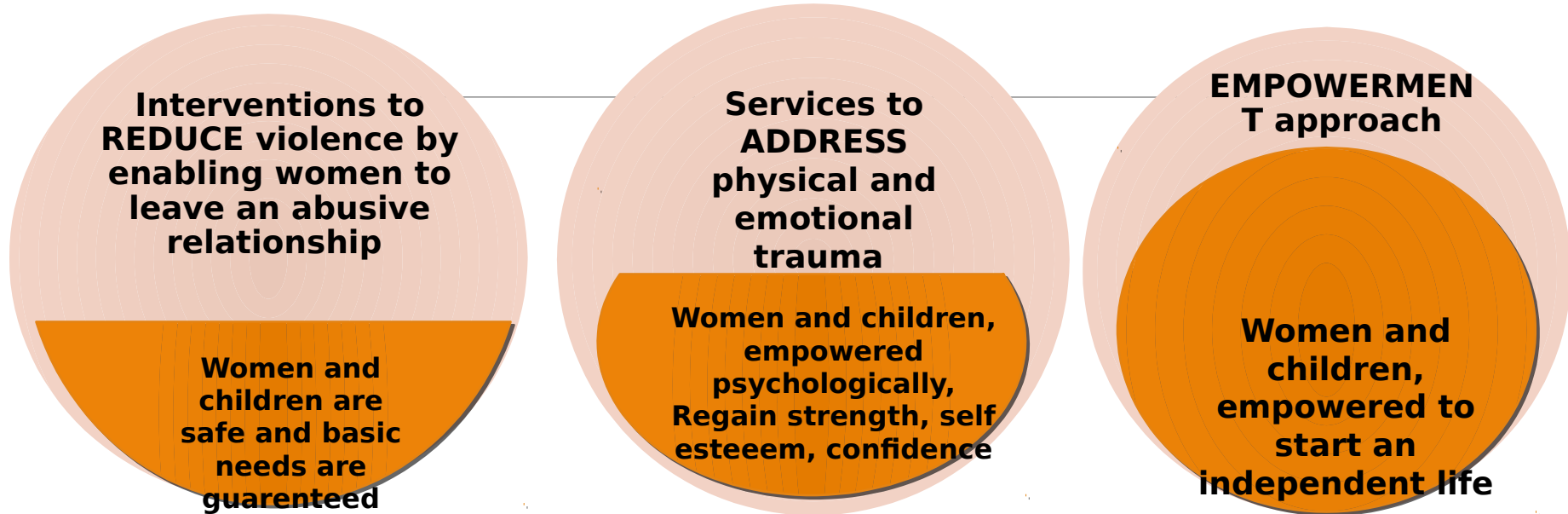
LEGEND

- - - Weak service delivery/collaboration
- Strong collaboration
- ↔ Good communication channels
- Multiple services
- Single services

(MAAT)

- W2W specialists
- ZDB specialist
- DV Unit Police officer
- Municipal anti-violence sector
- State Social services specialist
- Health care representative
- Child protection unit
- Education Department representative, School psychologist
- Labour office specialist
- Vocational training

Advocacy services for survivors



Listen to the survivor and identify the needs together
Explore alternatives and lead her through informed decisions

Connect the woman with professional service providers.
Empower her through economical and social integration programs for a sustainable independent future

Needs & strengths

Safety planning processes and tools are tailored to the identified needs and the complexities of the woman and her children's situation.

Hub of trusted people is build - avoid the feeling of isolation and disconnection from the natural environment.

Empowerment is grounded on the woman's strengths, their personal resources, abilities, skills, knowledge potential.

Work developed towards sustainable future independence for the women and their children



Crisis intervention center

Features

Cosy and welcoming house adapted for women and children.

Safe and accessible.

Detached from the counseling center.

Max. Capacity 10 beds.

- Immediate removal of women and children from abusive environments
- Provide safe accommodation and food from 1 to 15 days or more,
- Meet immediate needs of the victim and her children,
- Respond quickly and effectively to the physical and emotional trauma.
- 24 hour, 7/7 assistance with counselors, psychologists, social workers
- Medical treatment for immediate and long term physical trauma, other health problems,
- Start immediate legal procedures , prepare documentation, legal representation,
- Assistance for medium and long term accommodation.
- Prevent future violence
- Follow up and reintegration

Advocacy Services for victims

- **Psychological counseling**
- **Legal counseling**
- **Legal Assistance representation**

- Help women escape from their abusive relationship;
- Help victims cope with physical and emotional trauma;
- Start legal procedures, representation and assistance;
- Support financially legal procedures and health examinations, medications;
- Assist children cope with emotional trauma
- Childrens protection, education
- Connect with state service providers

- **Follow up and empowerment**

- Financial support for independent living and child caring
- Integrate women in economic and social empowerment programs.
- Coaching and career & job advice
- Professional training, vocational training
- Integration in the labour schemes, apprentice programs and employment
- Financial support for business start up.

Maria has a long history of domestic abuse by her husband, her children have witnessed violence several times. Maria had to quit her job, she decides to leave her abusive husband and turn to the police.

Maria is referred to the crisis center by the police

Maria and her children transferred to residential shelter

Maria and her children are supported through psychological therapies

Supported in the crisis shelter 15 days

Recognised as high risk case

Legal procedures fulfilled to guarantee their protection

Court decision to guarantee safety obtained

Children enrolled in another school/social activities

Supported in the residential shelter 6 months - 1 year

Maria participates in the coaching for career program

Maria is accompanied through social and labour services

Maria is helped to find an apartment & financed the rent for 2 months

Maria and her children start an independent life

Maria supported through follow up for 9 months

Maria is supported through legal processes of divorce

Maria and her children decide to go back to her town and start reintegration

Maria supported with grants for practice work/start up bussiness

about domestic abuse within communities can lead women who are actively seeking help to withdraw and become further isolated.

Woman has control over what happens to her during the time she is accessing a support service.

Services tailor their support based on a woman's particular needs and strengths, towards a sustainable independence.

Economic empowerment is crucial to achieve women's sustainable independence from her abusive partner.