

Sollentuna

KVINNOJOUR

info@sollentunakvinnojour.se

www.sollentunakvinnojour.se

08-35 60 69

What services do we have?

- Shelter for women and children
- Counseling for women who have experienced violence and support for their children
- Education and information to the local community about domestic violence
- Forming public opinion on issues related to violence against women
- Support group's

Definition of violence

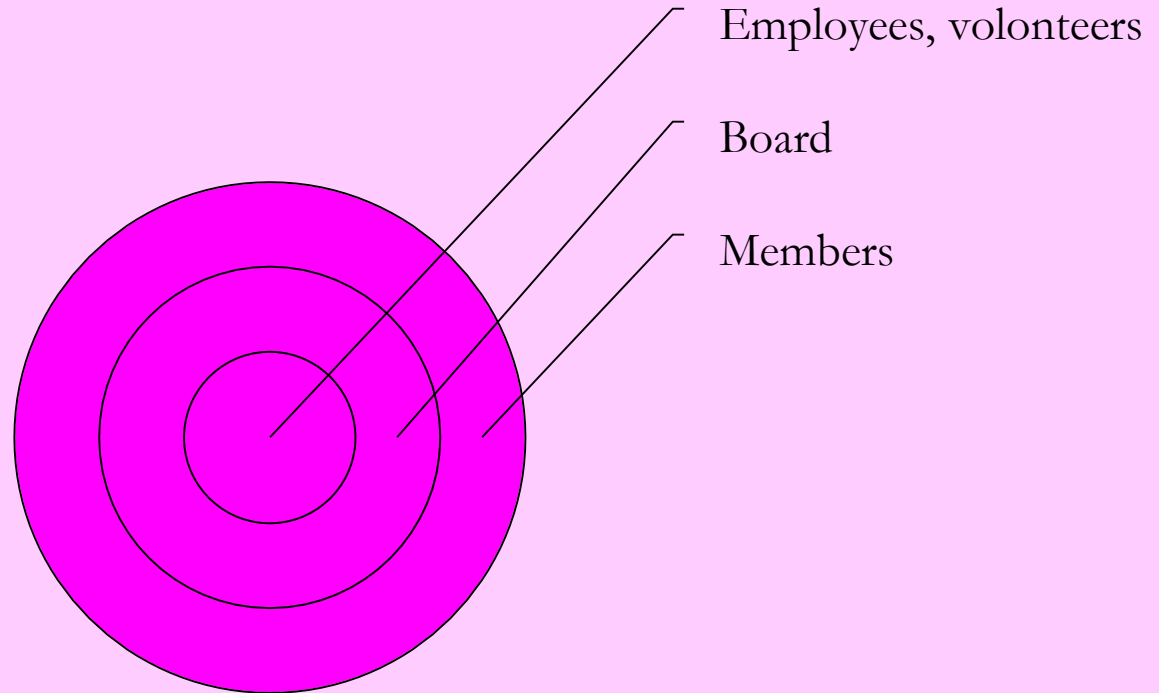
"Violence is an act directed against a person who, through this act, harms, pains or violates, causes this person to do something against her will or to abstain from anything she wants."

- Per Isdal

Definition of violence

- Physical violence
- Psychological violence
- Sexual violence
- Economical violence
- Material violence
- Threat of violence

Sollentuna Women's Shelter



Sollentuna Women`s shelter

- Organisation

4 employees, 26 volunteers,, Voluntary Board
100 members

- Funding

Governing funding

Municipal funding

Fee from social service

Donations

Membership fee

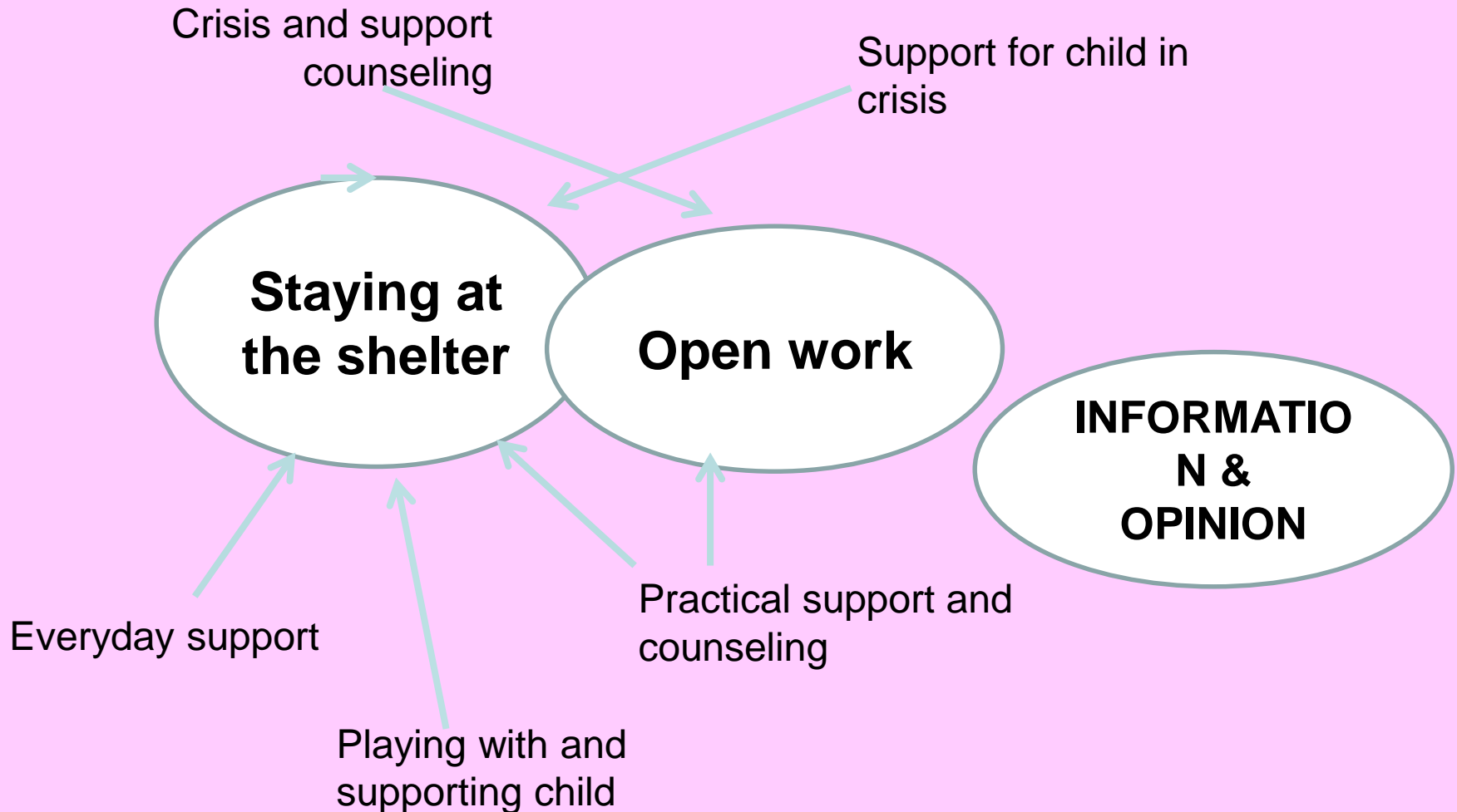
Sollentuna Women`s shelter

- Transparency
- Independent
- Giving domestic violence victim`s a voice

Who works at the shelter

- Employees: (professionals), counseling, cooperation with the authorities, education and information, administration, organize volunteers
- Volunteers: voluntary work, counseling, education and information, practical work
- Board: in charge of and responsible for all activities

Sollentuna Women's Shelter



Laws

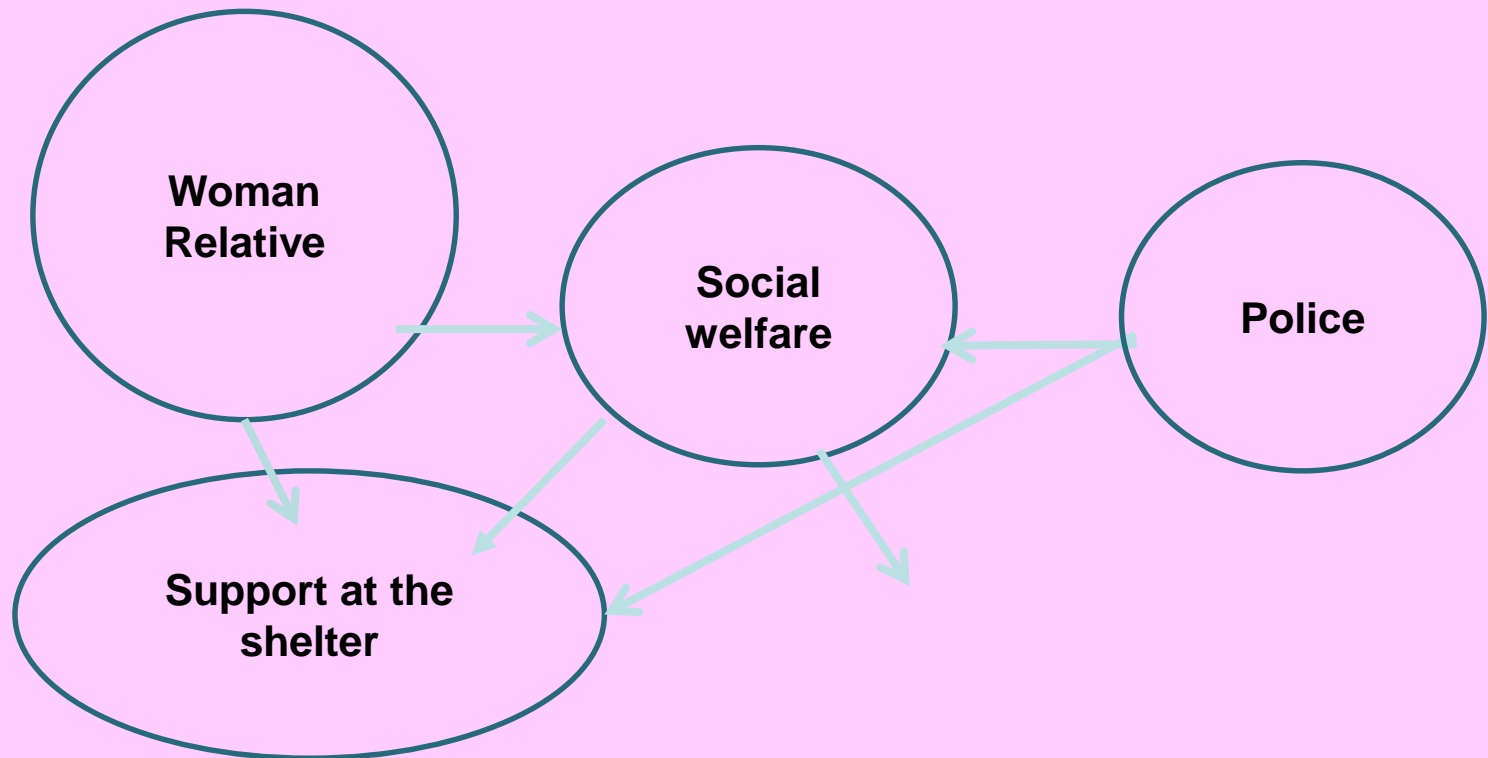
- The Swedish law of social service
- Special laws for victims of domestic violence
- Special appointed legal advisor
- Joint custody
- Children's right to education

Statistics 2017

- We provided shelter for 9 women and 12 children
- In 42 cases we had to deny women shelter
- 89 women came to the shelter for support.
- 250 women got support by phone, E-mail or at the shelter.

When a woman arrives at the shelter

- Social welfare office contact the woman shelter
- Police contact the woman shelter
- Woman or her relatives contact the woman shelter



A womans many contacts



To leave the shelter

- After 3- 12 months
- The most difficult thing is to find a new accommodation in Stockholm
- Difficulties with custody of the children
- Sollentuna Women's Shelter offers long term support

Thank you!

